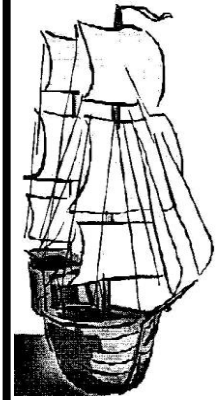




# Port Wakefield Community Newsletter

Wednesday March 9<sup>th</sup>, 2022  
Circulation 450

This is a Publication of the  
Port Wakefield Community Newsletter Inc.  
Email: [p.w.news@hotmail.com](mailto:p.w.news@hotmail.com)  
Published fortnightly



## COMMUNITY CALENDAR

### Monday

CFS Cadets (fortnightly) 5.00pm - 6.00pm  
CFS Training 6.00pm - 8.30pm

### Tuesday

Men's Shed Closed  
Dr Nyoni 10.15am-1pm  
SA Ambulance Training 7.30pm-9.30pm  
Library 10am-1pm

### Wednesday

Community Bus (pension week) 9.30am

### Thursday

Cards & Games (in recess) 11am-2pm  
Transfer Station Open 10am-11am

### Saturday

UC Op-Shop 9.30-11.30am  
Transfer Station Open 10am-12pm

### Sunday

Library 12pm-1.30pm  
Courthouse Museum  
(2nd Sun each month) 11:30am-2:30pm

Transfer Station Open 9am-10am

### Catholic

Mass 9am

### Uniting Church (UC)

Service 10.30am

## What would you like to see in the Port Wakefield Men's Shed?



Wakefield Regional Council  
is asking the Port Wakefield  
community for input on how  
they want their Men's Shed  
reopened.

Council will host a public  
forum to discuss the  
reopening of the facilities  
with locals.

When: Monday 21st March  
5.30pm - 6.30pm

Where: Port Wakefield  
Memorial Hall



More information inside

## Thought for the day

*Curiosity is a gift, a capacity for pleasure in knowing, which if you destroy, you make yourselves cold and dull.*

- John Ruskin

## --Please Note--

**Next Issue: Wednesday March 23rd, 2022.**

**News Items** to be submitted by email or to the Newsletter box in the Post Office by **Monday March 21st**

**Sports Results** to be emailed by 9am **Tuesday March 22nd**

**Info Phone: Monica 0438 860 285**

## Voice your opinion on the Port Wakefield Men's Shed

Are you a keen creator or workshop whiz? Port Wakefield Men's Shed is preparing to reopen and Wakefield Regional Council is seeking your ideas on how the Men's Shed should be run.

We are looking to re-invent the Men's Shed after closing to the public for a short period of time. Community members' input is vital to the future direction of the shed.

Council will be holding a public forum at the Port Wakefield Memorial Hall on Monday 21st March 2022, from 5.30 to 6.30pm.

"Men's Sheds are thriving across the Wakefield region with Balaklava, Owen and Snowtown all home to great sheds filled with laughter and mateship," Mayor Rodney Reid said. "These sheds provide fantastic creative outlets for people and an opportunity to congregate and share their skills in a safe and friendly environment."

"I'd encourage anyone who is keen to see the shed reopen or those wanting to start using the shed to voice their opinion at the forum."

RSVPs and inquiries are to be directed to Council's Community Development Coordinator, Holly on 8862 0800.



## Shell Coles Express Opening Hours Are Changing

From Monday March 14, the new opening hours will be:

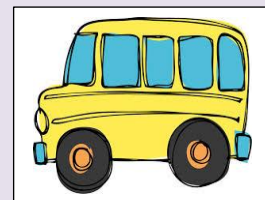
Monday to Friday  
5:00AM to 11:00PM

Saturday and Sunday  
6:00AM to 11:00PM

## Community Bus

Dates for Community Bus to

Community bus temporarily not running due to COVID.



Contact Helen on 0407 671 141 to book a seat

## In the Garden 2022 Vol. 3

Goodness gracious, how the time is racing by! Now, Autumn is on the doorstep. We are so lucky to have seasons and grow our vegetables and flowers at different times, thereby enjoying a wide variety.

Autumn is a beautiful time of year as the deciduous trees change their leaf colours into yellows, reds, and oranges, making for a beautiful showing.

It is time to plant for spring while the ground is still warm, as this assists the seeds to germinate.

For vegetables, there is quite a selection: Snow Peas, Green French Beans, Eggplant, Silverbeet, Spinach, Garlic Cloves, Leek, and Broccoli.

For flowers, Sweet Peas, Freesia, Sunflowers, and Ranunculus are all rewarding.

Cheers,  
Wendy Garvie





**WE NEED YOU!  
WILL YOU ANSWER THE CALL?  
VOLUNTEER NOW  
BECOME A FIREFIGHTER**

For more information drop into the Port Wakefield CFS Station after 6PM on Mondays



### Yesterday's News



*The Kadina and Wallaroo Times, March 23, 1889*

PORT WAKEFIELD- Our town is moved, although that is a thing which seldom happens, excepting when the population turns out to see the train pass. The new power is the "pressing want" of a skating rink. A syndicate has been formed, although somewhat slow in its movements. The idea was started at the railway station; the trains wait so long, that it was considered that a skating rink in the vicinity would be a certain success, as what was wanting in local population, would be made up by travellers anxious to relieve the tedium of a railway journey. The opening is expected to be a grand affair; several brass bands will be engaged, and the Mayor and the ex-Mayor will lead off on the skates.

It is expected that, stirred by the excitement, the Mayor will subsequently emulate the example of Mayor Shaw, and take a party of distinguished local residents for a trip round the neighbouring Corporations.

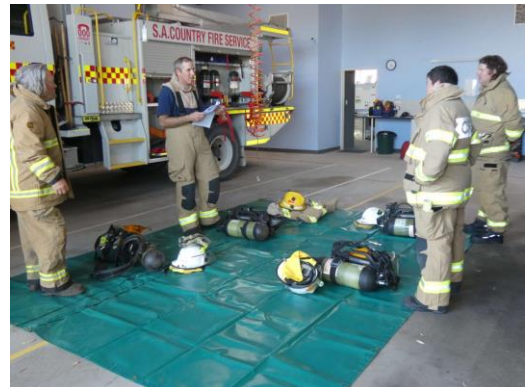
We are also going to have a regatta, at Easter. The wheat market is somewhat excited, but there is one drawback, namely, that there are more wheat merchants than wheat.

It is not yet decided whether the Mayor's ball will be held on Easter Monday or the Queen's Birthday.

[trove.nla.gov.au/newspaper/article/109094970](http://trove.nla.gov.au/newspaper/article/109094970)

### Port Wakefield CFS News

CFS training is back in full swing for 2022. Recent sessions have included training with the breathing apparatus that protects firefighters from toxic smoke...



And honing their road crash rescue skills by dissecting a BMW with the jaws of life. (Thanks to Port Wakefield Wreckers.)



Sound more interesting than your average Monday night? They're always looking for new volunteers!

### CFS Cadets News

During our first week of cadets, we were learning about radios. We learnt how to turn them on and off. We even said a few sentences to each other through the radio. We next learn the phonetic alphabet where the letters are replaced with words, e.g., G = golf, A = alpha, C = Charlie.

-Darcy

*The next fortnightly CFS Cadets session will be held on Monday, March 21. If you're aged between 11-18 and want to make new friends, and learn new skills while helping your community, drop by the station at 5pm to join the fun.*



## WORK WANTED

- Unskilled labour
- Gardening
- Housekeeping
- General duties
- Yard cleaning
- Heavy lifting
- Anything!

\$20 an hour or \$17.50 for pensioners.

Phone Tumai anytime  
on 0499 782 884

### Quiz Questions

- 1- Which 1980s action movie starred two future US state governors?
- 2- In which country would you find the Strzelecki Desert?
- 3- What is the capital of New Zealand?
- 4- What is the name for a word that is spelled the same in reverse?
- 5- What is the hardest substance in the human body?

### Silly Signs



### Wakefield Council Rating Review

A new approach to rating is being considered by Wakefield Regional Council to help achieve the community's vision for the region while cushioning impacts on ratepayers from sharp property valuation increases. The approach is detailed in a Rating Consultation Paper and Draft Rating Policy and we are seeking your feedback.

The Rating Consultation Paper looks at current rating issues, a proposed new approach for determining rates, impacts of the proposed changes and how the changes will help achieve our Wakefield 2030 Community Plan. The Draft Rating Policy aims to formalise the approach and details a new rate cap, fixed charges and new strategic rebate to attract and support businesses and industries, encourage investment and facilitate residential growth.

#### How can I provide feedback?

A public meeting will be held on Thursday 17 March, 5-6pm, also at the Balaklava Town Hall, for anyone wishing to make a verbal or written submission.

#### Where can I find out more?

You can read the documents on our website or come into our Balaklava office if you would like to view a hard copy.

If you have any questions, you can

- Visit our website - [wrc.sa.gov.au](http://wrc.sa.gov.au)
- Send us an email to [admin@wrc.sa.gov.au](mailto:admin@wrc.sa.gov.au)
- Call us on 8862 0800.

A public information session will be held on Wednesday 9 March 2022, 5-6pm at the Balaklava Town Hall, 8 Wallace Street, for anyone who wishes to find out more or ask any questions.

Your RSVPs for the public information session and meeting are essential. Please phone us on 8862 0800 or email [admin@wrc.sa.gov.au](mailto:admin@wrc.sa.gov.au) to book your spot.

Written submissions on the documents must be received by 6pm on Thursday 17 March 2022 and can be made to the Chief Executive Officer by:

- Website – [wrc.sa.gov.au](http://wrc.sa.gov.au)
- Email – [admin@wrc.sa.gov.au](mailto:admin@wrc.sa.gov.au)
- Post – PO Box 167 Balaklava SA 5461
- At the information session or meeting





**hAMCo**  
SERVICES

## HOME AND GARDEN MAINTENANCE

**0459 363 186**

### GARDEN & OUTDOOR SERVICES    MAINTENANCE SERVICES

- \*Lawns & Edges
- \*Tap Washers Replaced
- \*Window Cleaning
- \*Gutter Cleaning
- \*Flyscreen Replacement
- \*Rubbish Removal
- \*Fence & Gate Repair
- \*On-site Welding
- \*Weeding & Pruning
- \*Door & Window Locks
- \*Solar Panel Cleaning
- \*Plus so much more

FREE QUOTES

PENSIONER RATES APPLY

FAST, FRIENDLY, RELIABLE, LOCAL SERVICE

### AVON ART & CRAFT GUILD

#### Morning Tea St Patrick Day Shenanigans

Thursday 17<sup>th</sup> March 2022  
10.30am to 12 Noon  
Avon Craft Hall  
1883 Avon Road, AVON



This is an invitation to you and a friend to attend  
our

#### St Patricks Day Morning Tea.

Displays, Irish Fun, Prizes  
Bring or wear something green  
Entry \$3.00 pp

Due to this unique event numbers are limited so  
please book early

PH. 88671127.or O400 000 250 or 0447 328 019

Covid Rules apply.  
Email [jmstew@hotmail.com.au](mailto:jmstew@hotmail.com.au)

### Lifeline Connect Clare Newsletter

Well, it's March already and we hope your year is off to a fabulous start. Here at Lifeline, we've started the new year on a positive note with our two new counsellors and some new volunteers. We are always looking for more people to join our team of volunteers, so if you or someone you know would like more information on how you can help out, please don't hesitate to get in touch.

#### Eclipse Group

Suicide can be a hard word to say, let alone be a topic of conversation. The Eclipse Group offers support for those who have experienced suicidal attempts. The support group is free, closed, and confidential. People who would like to participate in this group will start at the same time over the course of eight weeks. This creates an environment that is more comfortable to share personal information. This group is not afraid to talk about suicide. There will be conversations about what got participants to the point of thinking that being dead was better than being alive. There will also be conversations about what might be reasons to stay alive and strategies that may help in keeping participants safe for a more hopeful future. The Eclipse Group will be a safe and non-judgemental space, allowing us to talk about things that we don't want to burden families and friends with.

For more information, call the Clare Connect Centre on (08) 8842 2827



INTERESTED IN FOOTY OR NETBALL?

WE WANT YOU

AT THE EAGLES!



**JUNIOR PLAYERS WELCOME!**

...fun...games...skills...mateship...



- ★ all skill levels and experience welcome, in all grades from under 8's to under 17's
- ★ guaranteed game time for your child
- ★ family friendly club    ★ great way to meet new families
- ★ **FREE** club welcome pack for juniors, jam packed with awesome Eagles merchandise!

**WE LOVE NEW FACES AT THE EAGLES NEST!**

For more info, contact our junior co-ordinators:

- Dillon Catford (football) on 0429 642 253
- Sarah Young (netball) on 0408 834 145



For all the latest news, please follow "Hummocks Watchman Eagles" on [facebook](#)

**HUMMOCKS WATCHMAN EAGLES FOOTBALL & NETBALL**

*If your kids aren't already playing winter sports, they're very welcome to come and try football & netball at Hummocks Watchman Eagles.*



Mum (Nancy Halls) asked me to put this into the Wakey Newsletter, so yes, I am doing as I was told!

As you can see, Mum is in the Moonta Nursing Home and enjoying herself painting, playing bowls, and won! A few people in doing concerts for the residents.



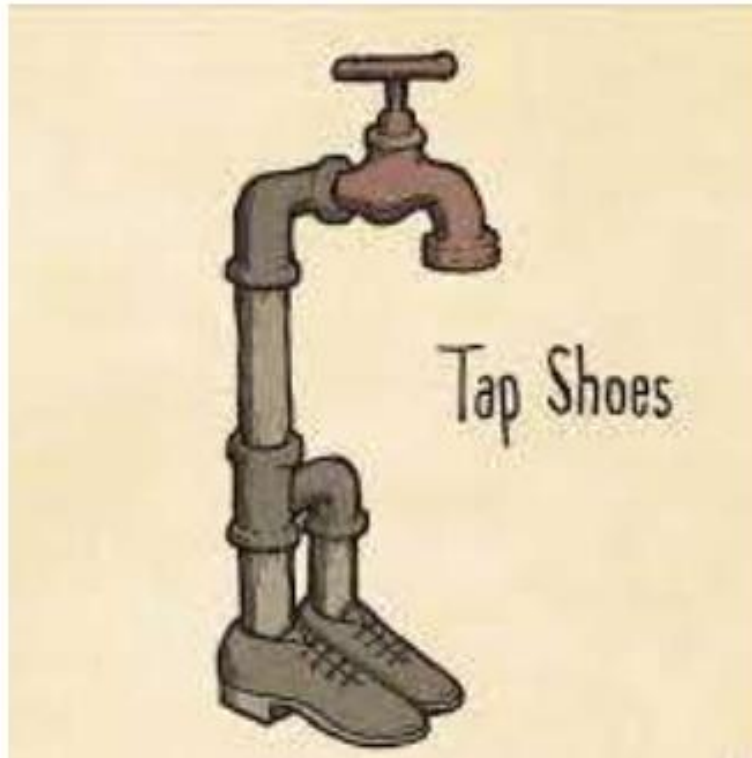
Love you, Mum  
& so do all your family and friends!



Moonta Health & Aged Care Service  
February 20 at 7:12 PM · 🌐

Amanda had explained to the Residents about a page on Facebook called SA Rocks. People have been painting for a while now and placing them all over SA. Residents have decided they would like to contribute to the page and began to paint. I think they look awesome. So look out for these as they will be hidden around MOONTA.





**For all your Plumbing jobs, big and small.**

**Did you know we have a mobile Ensuite available for Hire?**

**JOEL WILSON  
PLUMBING & GAS  
0458 103 833**

**EFTPOS available**

**Adjusted opening hours from January 2022: Tuesday, Wednesday &  
Thursday from 9am until 3pm, or by appointment.**



# Birthdays

## March

**Birthstone-** Bloodstone  
**Flower-** Jonquil



**March 10-** Sienna Butson  
Wendy Garvie

**March 11-** Mark Moreton Jr.

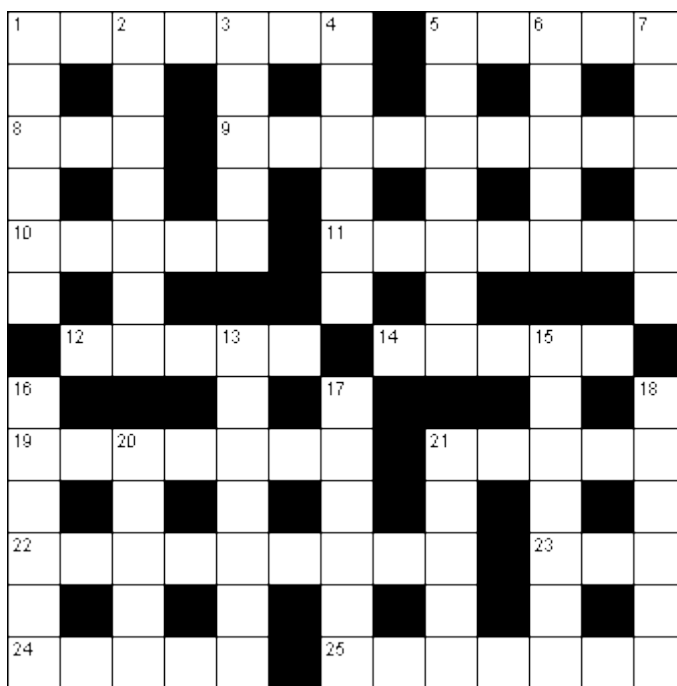
**March 15-** Shaylee Hocking

**March 17-** Dallas Hill

**March 18-** Ryley Milton

**March 21-** Dianne Chadbourne

# Crossword 18



### Volunteer Wanted

Can you spare an hour and a half once a month?

The Library is in need of a volunteer on the second Sunday of each month from noon until 1:30pm.

Please call Monica for more info on 0438 860 285



### Across

1. Meteorological conditions (7)
5. Accolade (5)
8. Conclusion (3)
9. Submersible warship (9)
10. Task (5)
11. Alphabetic character (7)
12. Guide (5)
14. Square root of forty-nine (5)
19. Tableland (7)
21. Hoard (5)
22. Disregarded (9)
23. Small vegetable (3)
24. Happening (5)
25. Sincere (7)

### Down

1. Twist (6)
2. Gruelling (7)
3. Overly eager speed (5)
4. Burrowing mammal (6)
5. Greed (7)
6. Exculpation (5)
7. Resides (6)
13. Component (7)
15. Fugitive (7)
16. Parazoan (6)
17. Chelonian reptile (6)
18. Leave (6)
20. Slant (5)
21. Aromatic wood (5)

### Crossword 17 Solution

D	E	L	I	V	E	R	S		C	A	R	E	
E			A		E		A		L		A		
R	E	G	A	L		C	Y	G	N	E	T	S	
I		R		I		O		E		R		E	
S	L	E	N	D	E	R		N	O	T	E		
I		A					D		D			R	
O	C	T	A	V	E		R	A	F	F	I	A	
N			A				R		A			V	
	E	P	I	C			A	R	T	I	C	L	E
V		I		A			R		R		E		N
A	B	S	E	N	C	E			A	U	D	I	O
S		T		T			L						U
T	R	E	E			H	Y	P	N	O	S	I	S

### Quiz answers

- 1- *Predator* or *The Running Man* (both starred Arnold Schwarzenegger and Jesse Ventura)
- 2- Australia
- 3- Wellington
- 4- Palindrome
- 5- Tooth enamel

### ADVERTISEMENT PRICES

**Closing time Friday 3.30pm.**

<b>FULL PAGE</b>	<b>\$25.00</b>
<b>½ PAGE</b>	<b>\$12.50</b>
<b>¼ PAGE</b>	<b>\$ 7.50</b>
<b>2 or 3 lines</b>	<b>Free</b>

**Business Services Directory**

**\$150/year**

**More Info: 0438 860 285**

**FRASER ELLIS MP**  
MEMBER FOR NARUNGA



37 Graves Street Kadina 5554  
(08) 8832 2455  
narungga@parliament.sa.gov.au  
www.fraserellis.com.au

## MID NORTH

### Pest and Weed Control

**ALL PEST PROBLEMS  
GENERAL & RURAL WEEDS**

- Termites
- Spiders
- Bees, Wasps
- Rats & Mice
- Flies, Fleas
- Millipedes
- Earwigs
- Salvation Jane
- Artichokes
- Calthrop
- Horehound
- Cape Tulip



Call Andrew Boylan 0429 802 912  
Office 8842 2001  
422 Main North Road, Clare  
HEALTH COMM. LIC NO 12

VF2248903

## T.A. REDDEN PAINTER

PO Box 20, Balaklava S.A. 5461

- \* **NO JOB TOO BIG OR SMALL**
- \* **AVAILABLE ALL AREAS**
- \* **QUALITY WORKMANSHIP**
- \* **FREE QUOTES**
- \* **FULLY INSURED & LICENCED (BLD. 27142)**

Terry:

**Ph: 0407 077 992**

**taredden@internode.on.net**

## WH TREVERTON

### PAINTER

**WAYNE**  
**0417 889 753**

15 Railway Tce  
Balaklava SA 5461  
Home phone: 8862 1509



BLD Lic: 21955

Update your bedroom with one of our many Bedroom Suites!  
Come in store and check out our full range of quality furniture at an affordable price.



### BALAKLAVA STITCH JOINT

2-6 HOWE STREET, BALAKLAVA –  
8862 1074  
For all your Blinds / Awnings,  
Flooring  
and Furniture needs



**Monday 9:30am – 1:00pm**  
Pharmacist Present 9:30am-1pm

**Tuesday 9:30am – 4:30pm**  
Pharmacist Present 9.30 - 4:30pm

**Wednesday 9:30 – 1:00pm**  
Pharmacist Present 9:30 –  
1:00pm

**Thursday Closed**

**Friday 9:30am – 4:30pm**  
Pharmacist Present 9:30 - 4:30pm

**22A Burra St.**

**Port Wakefield**

**Phone/fax 88671566**

Proprietor – A Rosser & Partners



**FOODLAND  
BALAKLAVA**  
13 WALLACE ST  
BALAKLAVA SA 5461  
PHONE 8862 1571  
FAX 8862 2096  
**Online Shopping:**  
**foodlandbalaklava.com.au**



### PORT WAKEFIELD MOTORS RECOVERY & TYRE SERVICE CENTRE

All Mechanical Repairs/Service,  
Tyre Service, Towing,  
24/7 Recovery & Road Service,  
Beach Rescue  
*Pensioner Card Welcome*  
Call Ralph Todino  
**Ph: 8867 1311 or 0418 800 952**  
Highway One, Port Wakefield  
[www.ptwakefieldmotors.com.au](http://www.ptwakefieldmotors.com.au)

### Stress Free Property Conveyancing

When buying or selling property –  
either by private contract or through  
an agent – ensure your peace of  
mind and be confident that your  
contractual rights are protected.

Call us for an obligation free quote.



**GERMEIN REED**  
Lawyers & Conveyancers  
2A Forster Street Kadina  
PO Box 12 Kadina SA 5554  
8821 1700  
[www.grmlawyers.com.au](http://www.grmlawyers.com.au)