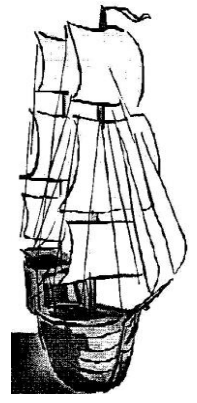


# Port Wakefield Community Newsletter

Wednesday June 19th, 2024  
Circulation 450

This is a Publication of the  
Port Wakefield Community Newsletter Inc.  
Email: [p.w.news@hotmail.com](mailto:p.w.news@hotmail.com)  
Published fortnightly



## COMMUNITY CALENDAR

### Monday

CFS Cadets (fortnightly) 5.00pm - 6.00pm  
CFS Training 6.00pm - 8.30pm

### Tuesday

Clementina Corner 10:00am-1:00pm  
Men's Shed 10:00am-1:00pm  
Dr Nyoni 10.15am-1pm  
SA Ambulance Training 7.30pm-9.30pm  
Library 10:00am-1:00pm

### Wednesday

Community Bus (pension week) 9.30am

### Thursday

Transfer Station Open 10am-11am

### Saturday

UC Op-Shop 9.30am-11.30am  
Transfer Station Open 10am-12pm

### Sunday

Library 12:00pm-1.30pm  
Courthouse Museum  
(2nd Sun each month) 11:30am-2:30pm  
Clementina Corner  
(2nd Sun each month) 11:30am-2:30pm  
Transfer Station Open 9am-10am

### Catholic

Mass 9:00am

### Uniting Church (UC)

Service 10.00am

### Bin Days

Yellow Bin- June 27<sup>th</sup>  
Green Bin- June 20<sup>th</sup>



**Wakefield Regional Council's Annual  
Community Plan Now Open for Community  
Consultation**

More info inside

### Thought for the day

*Stay away from negative people: they have a  
problem for every solution.*

- Albert Einstein

We acknowledge the Kaurna people as the  
traditional custodians of the Adelaide Plains and  
pay our respects to Elders past, present, and  
emerging.

**Our next issue is out on Wednesday July 3rd, 2024.**

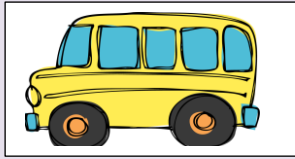
**News Items** to be submitted by email to  
[p.w.news@hotmail.com](mailto:p.w.news@hotmail.com) or to the Newsletter box in the Post  
Office by **9am on Tuesday July 2<sup>nd</sup>.**  
**Info Phone: Jill 0448 709 800**

## Community Bus

Dates for Community Bus to

**Balaklava-**

June 19<sup>th</sup>  
July 3<sup>rd</sup>



Pickup at 9:30am,  
Depart Balaklava at 12:45pm

Contact Helen on 0407 671 141 to book your seat

## Quiz Night

Come along for a fun night of fact or fiction!

Bring a friend!

7pm, Friday July 5<sup>th</sup> 2024

at Christ Church Anglican Church Hall

Cnr Humphrey & Scotland Streets

Balaklava

Only \$5 per person.

Make up a team of 4 or just come along and join a team!

BYO supper and drinks

Tea and Coffee will be supplied.

Jill's Sewing apologises but due to illness sewing won't be available until the 8<sup>th</sup> of July.

Cheers,  
Jill

**EXTRAVAGANZA NOT TO BE MISSED**



# DOLL'S FESTIVAL

Avon District Hall

1883 Avon road, Avon SA 5501

July School Holiday Event

Open to Public Tuesday July 9th

& Saturday July 13th

From 10.30 am to 3.30pm

Entry Adults \$ 10.

Children 5-15 years \$5

0-5 years free

Group Bookings until end of July

Minimum of 10 by appointments only

Refreshments on sale

For Group Bookings & Info Contact

Ph 88671127 or 0419819420



## FREE COMMUNITY EVENT Adult Mental Health First Aid Certificate Training

Thursday 27 & Friday 28 June, 2024

9:30am – 4:30pm

Balaklava Bowling Club, May Terrace, Balaklava

Register by Phone or Email

Beverley Dales 0413 303 576

[globalcarecounselling@gmail.com](mailto:globalcarecounselling@gmail.com)

Final date of registration is close of business Friday 14 June, 2024

Early registration encouraged, spaces are limited

This accredited training course teaches participants how to provide initial support to someone who may be experiencing a mental health illness or a mental health crisis, until professional help is received, or the crisis resolves.

Participants will be skilled in how to identify indicators for a variety of mental health illness, effectively communicate their concerns to the person and then assist them to both connect with an appropriate professional and engage in self-care practices.

Attendance at both days of training is required to attain the certificate which is government accredited and valid for 3 years before requiring re-accreditation. **An individual email address is required to facilitate accreditation.**

The training will be facilitated by Beverley Dales a Principal Master Trainer of MHFA.

Many will remember Beverley from her time of volunteering Mental Health services post-Pinery.

For further information about the training content scan the QR code or go to:

<https://www.mhfa.com.au/our-courses/adults-supporting-adults/standard-mental-health-first-aid/>



Although registration is open to all adults 18+, if you are engaged in providing a service to the Community you are encouraged to apply.

Jointly sponsored by  
Mid-North Mental Health Initiative and Global Care



## Wakefield Regional Council's Annual Community Plan Now Open for Feedback

This year's Annual Community Plan will be supported by over \$2.869M in grants from both the State and Federal Governments to help deliver capital works and the Port Wakefield Cultural Connection project as outlined in Council's 2024/25 plan. Council endorsed its 2024/25 Annual Community Plan on Monday for community consultation and Mayor Rodney Reid said Council has put forth a budget that proposes the delivery of the first stages of the transformation of Port Wakefield's Edward Street.

"Guided by Wakefield 2030 and funded by support from the Federal and State Governments we will now be able to pursue our Port Wakefield Cultural Connection Project," Mayor Rodney Reid said. "This project will deliver a new town centre plaza on Edward Street, tree planting, footpath and pram ramp upgrades, the establishment of an Indigenous art trail that will lead to the foreshore precinct where the failing tidal pool boardwalk will be replaced with a new compliant bridge."

Beyond Port Wakefield this year's draft plan proposes a capital works budget of \$12M to deliver Wakefield 2030 priority projects which consists of \$3.35M in capital renewal works and \$8.66M in new capital projects. Other key capital works include the \$560,000 of kerb and median works in Balaklava on the Edith Terrace roundabout, a dedicated \$40,000 for pram ramp renewal across townships and \$170,000 to construct the western levee bank in Bowmans.

The proposed spending on roads for the upcoming year includes 11.45KM of sealed road and 53.13KM of unsealed road renewal and construction with a combined total of \$7.1M to complete these projects. Council will also access the Federal Government's Roads to Recovery Fund, which may increase unsealed road renewal throughout 2024/25.

Council will target an operating deficit of \$1.16M in 2024/25 due to operating revenues of \$19.3M and operating expenses of \$20.46M, road renewals and community wastewater network operational costs continue to rise plus the carryover of the \$200k to dredge the Port Wakefield Tidal Lagoon from 2023/24. For the 2024/25 Financial Year, it is proposed to increase total rates collected by an average of six percent.

Draft Community Plan will be open for community consultation until 5pm, Wednesday June 26, 2024. Council will dedicate an hour at its Wednesday June 26 Council meeting to hear feedback from the public, alternatively you can leave your feedback by;

- \* By email – to [admin@wrc.sa.gov.au](mailto:admin@wrc.sa.gov.au)
- \* By mail – to PO Box 167, Balaklava SA 5461
- \* By website – [wrc.sa.gov.au](http://wrc.sa.gov.au)

Hard copies are available on request or from post offices in Balaklava, Blyth, Hamley Bridge, Owen, Port Wakefield, Snowtown and Brinkworth or from Council's Balaklava office



## HUGE GARAGE SALE!!

SITE 26 PORT WAKEFIELD CARAVAN PARK

SATURDAY 29TH & SUNDAY 30TH  
JUNE 8AM TO 4PM

HOUSEHOLD ITEMS, KAYAKS,  
MOTORBIKE TRAILER, CLOTHING,  
DVDS AND MUCH MORE!



## Will you answer the call?

SA Ambulance service is looking for more volunteers in your region



[saasvolunteer.sa.gov.au](http://saasvolunteer.sa.gov.au) or call 1300 175 584

## Port Wakefield CFS Annual General Meeting

Monday July 29<sup>th</sup>, 2024  
All positions open.



Mark your calendars!  
Coming up from the Port Wakefield Community Events team...



# PORT WAKEFIELD BINGO SUNDAY 21ST JULY

EYES DOWN 1PM  
PT WAKEFIELD SM HALL

LUNCH SERVING FROM 12PM  
BEEF CASSEROLE  
\$6.00 PER BOWL

CASH PRIZES, MYSTERY  
JACKPOT ROUND, RAFFLES



# Port Wakefield's Father's Day Golf Sunday 1st September

At Port Wakefield golf course

Spend time on the golf course with Dad!

**\$40 Adults**  
**\$20 Children**

Includes a Round of Golf,  
Breakfast, Lunch and Dinner

8:30am - Breakfast- Bacon & Egg Sandwiches  
10am - Tee Off  
Lunch Sausage Sizzle  
6:00pm - Dinner - Roast and Veg

REGISTER PLAYERS BEFORE 16th August

Tash: 0458496432

Aliesha: 0413888096

[pw.commevents@gmail.com](mailto:pw.commevents@gmail.com)



PORT WAKEFIELD COMMUNITY  
EVENTS COMMITTEE

# TRIVIA NIGHT

FRIDAY  
19TH JULY  
PW SM HALL

DOORS OPEN AT: 06:00PM  
GAME STARTS AT: 07:00PM

RAFFLES, WINE WALL AND MYSTERY  
AUCTION & PRIZES TO WIN

BYO DRINKS AND SNACKS  
OR BUY ON NIGHT

**\$10.00 PER  
PERSON MAX  
TEAMS OF 10**

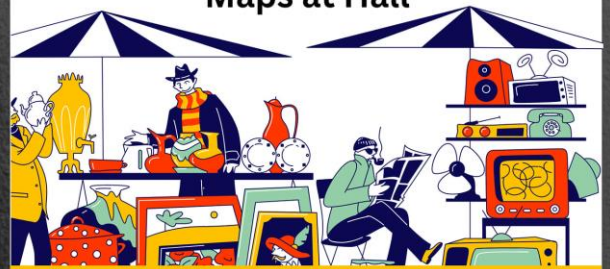
REGISTER YOUR TEAM BY 12TH JULY:

[PW.COMMEVENTS@GMAIL.COM](mailto:PW.COMMEVENTS@GMAIL.COM)

ALIESHA : 0413 888 096

# PORT WAKEFIELD GARAGE AND BOOT SALE

Markets and Boot Sale at SM Hall  
Whole Town Garage Sale  
9am - 3pm  
Maps at Hall



Saturday 5th and  
Sunday 6th October





**hAMCo**  
SERVICES

HOME AND GARDEN MAINTENANCE

**0459 363 186**

**GARDEN & OUTDOOR SERVICES MAINTENANCE SERVICES**

- \*Lawns & Edges
- \*Tap Washers Replaced
- \*Window Cleaning
- \*Gutter Cleaning
- \*Flyscreen Replacement
- \*Rubbish Removal
- \*Fence & Gate Repair
- \*On-site Welding
- \*Weeding & Pruning
- \*Door & Window Locks
- \*Solar Panel Cleaning
- \*Plus so much more

FREE QUOTES

PENSIONER RATES APPLY

FAST, FRIENDLY, RELIABLE, LOCAL SERVICE



## Yesterday's News

*The Central Advocate* July 5<sup>th</sup>, 1907



PORT WAKEFIELD -- Several of the inhabitants at an early hour Sunday morning were abruptly waked up by a considerable noise in one of the streets thinking an invasion of the town had taken place. Many of the sterner sex sought out firearms and raised huge barricades against any intrusion of the enemy. When things had somewhat quietened down an inspection of affairs showed that a party had after some trouble quenched a very large thirst and were fossicking round looking for something to eat.

This was followed by a more diabolical act on Sunday night by the painting of a trough about a mile from the town along the Balaklava road. This spot is known as the lover's resort, and Sunday night when a youthful couple sat down upon this upturned trough they found that they had secured an everlasting supply of paint. The artists, who are a few lads, have been ran to earth and most of them now find it a difficult matter to sit down.

More trouble followed at an early hour Monday morning when a couple with their family around them were enjoying the sleep of the innocent, from which they awoke in a most violent manner by the explosion of what appeared to be an infernal machine, but what afterwards turned out to be a new fashioned alarm o'clock that had been brought into use for the first time that morning.

[trove.nla.gov.au/newspaper/article/207083495](http://trove.nla.gov.au/newspaper/article/207083495)

## Quiz questions

- 1- What was the name of Beyonce's group before her solo career?
- 2- Riyadh is the capital of which country?
- 3- Who kicked a career-high five goals for Adelaide in the 1997 AFL grand final?
- 4- What animal is the Capricorn zodiac sign?
- 5- Who does Elizabeth Bennet fall in love with in *Pride and Prejudice*?

## Sudoku 22

			3	7			1	
					9	2		
				8			9	7
		9		5		7		
5			8	2	7			3
		3		1		4		
2	7			6				
		6	2					
	1			3	5			

SudokuoftheDay.com

# JOEL WILSON PLUMBING & GAS 0458 103 833

I'M A PLUMBER FOR CRYIN' OUT LOUD! I HAVE  
A LICENSE TO WEAR MY PANTS THIS LOW!!



EFTPOS available

Opening hours: Tuesday, Wednesday & Thursday from 9am until 3pm, or by  
appointment.



Lic No. PGE269220

ABN: 84 627 968 729

# Birthdays

## June

**Birthstone-** Pearl  
**Flower-** Rose



June 19- Matthew Warrander  
Georgie VanDoorn

June 23- Tanya Watson

June 25- Daniel Falkstrom

June 26- Jake Robertson

June 28- Bart Butson

## July

**Birthstone-** Ruby  
**Flower-** Larkspur

July 1- Emily Lane-Watson

July 2- Chloe Hean

July 3- Amy Rapko

### ADVERTISEMENT PRICES

<b>FULL PAGE</b>	<b>\$30.00</b>
<b>½ PAGE</b>	<b>\$17.50</b>
<b>¼ PAGE</b>	<b>\$ 12.50</b>
<b>2 or 3 lines</b>	<b>Free</b>

### Business Services Directory

**\$200/year**

To place your ad, you can email us at  
p.w.news@hotmail.com, drop it in the  
Newsletter Box at the post office, or call  
Jill on 0448 709 800

### Jobs solution

1	C	E	N	T	5	M	O	N	T	9	A	J	A	R	
14	U	T	A	H	15	A	C	O	R	N	16	R	A	C	Y
17	B	A	B	Y	18	S	I	T	T	E	19	A	N	T	E
21	M	O	D	22	B	A	M	B	I	23					
24	C	A	P	E	S	25	B	I	L	G	E	26	T	E	A
27	P	I	T	28	T	U	R	E	E	N	29	O	A	K	
32	A	M	A	N	D	I	N	E	33	A	O	R	T	A	
34															
35															
36															
37															
38															
39															
40															
41															
42															
43															
44															
45															
46															
47															
48															
49															
50															
51															
52															
53															
54															
55															
56															
57															
58															
59															
60															
61															
62															
63															
64															
65															
66															
67															
68															
69															

# Cattle Drive

1	2	3	4	5	6	7	8	9	10	11
12				13			14	15		
16				17				18		
19			20			21	22			
23					24	25				
26	27	28		29	30	31	32	33	34	
35				36	37	38	39			
40			41	42			43	44		
45			46	47			48	49		
50			51	52	53	54				
55				56	57	58				
59	60				61	62			63	64
65				66	67			68		69
70				71				72		
73				74				75		

### ACROSS

- 1 Great
- 5 Hoagie
- 8 Passing trends
- 12 Ribbon tie
- 13 Play a guitar
- 15 Air (prefix)
- 16 Roof covering
- 17 Lincoln's coin
- 18 \_\_\_ of Arc
- 19 Association
- 21 Thin rope
- 23 Meows
- 25 Covering for the head
- 26 Revelry
- 29 Heat giver
- 31 Outmoded
- 35 Rough
- 37 Steal
- 39 Baths
- 40 Alternative (abbr.)
- 41 Mocking
- 44 Trail
- 45 Put down
- 47 Large weight unit
- 48 Reach a decision
- 50 Not humble
- 52 Bill
- 54 Motherless calf
- 55 Stein
- 57 Parrot
- 59 Part human part machine
- 62 Frozen dessert
- 65 Healing plant
- 66 Sound
- 68 Leave out
- 70 Pleads
- 71 Side cut of beef
- 72 Young Men's Christian Association
- 73 Hit a fly
- 74 Madagascar franc (abbr.)
- 75 Rice wine

### DOWN

- 1 Eastern Time
- 2 Bucket
- 3 Island
- 4 Less expensive
- 5 Bovine unable to produce
- 6 Pot
- 7 Hamburger rolls
- 8 Tortilla rollups
- 9 Long time
- 10 Position in the back
- 11 Male offspring of boot and used to prod
- 14 Hollywood version of cowboy life
- 20 Speculate
- 22 Strike sharply
- 24 Dutch colony in South America
- 26 Head skin
- 27 Opposite
- 28 2:1, for example
- 30 Neither's partner
- 32 Small bunch of flowers
- 33 \_\_\_ Arabia
- 34 \_\_\_\_\_
- Lauder cosmetics
- 36 Snack
- 38 Raise the ante
- 42 Kid
- 43 Chest wood
- 46 Most dense
- 49 Herds and takes care of cattle
- 51 Two
- 53 Establishing
- 56 Tennis player Steffi
- 58 Prepares morning and evening meals
- 59 Evidence
- 60 Meditation
- 61 \_\_\_ of Mexico
- 63 Austin novel
- 64 Clock sound
- 65 Abdominal muscles (abbr.)
- 67 Barrier
- 69 Thai

### Sudoku 21 Solution

1	9	8	5	7	4	6	2	3
2	4	5	6	3	1	9	8	7
7	6	3	9	2	8	5	1	4
3	5	6	4	1	7	2	9	8
4	7	9	8	6	2	3	5	1
8	2	1	3	9	5	4	7	6
6	1	2	7	4	9	8	3	5
5	3	7	2	8	6	1	4	9
9	8	4	1	5	3	7	6	2

### Quiz answers

- 1- Destiny's Child
- 2- Saudi Arabia
- 3- Shane Ellen
- 4- A goat
- 5- Mr. Darcy



# MID NORTH

## Pest and Weed Control

### ALL PEST PROBLEMS GENERAL & RURAL WEEDS

- Termites
- Spiders
- Bees, Wasps
- Rats & Mice
- Flies, Fleas
- Millipedes
- Earwigs
- Salvation Jane
- Artichokes
- Calthrop
- Horehound
- Cape Tulip



Call Andrew Boylan  
Office 8842 2001  
422 Main North Road, Clare  
HEALTH COMM. LIC NO 12

VF224895



Monday 9:30am – 1:00pm

Tuesday 9:30am – 4:30pm

Wednesday 9:30 – 1:00pm

Thursday Closed

Friday 9:30am – 4:30pm

Saturday 9:30 – 12:00pm

22A Burra St.  
Port Wakefield  
Phone 88671566  
Fax 7070 0015

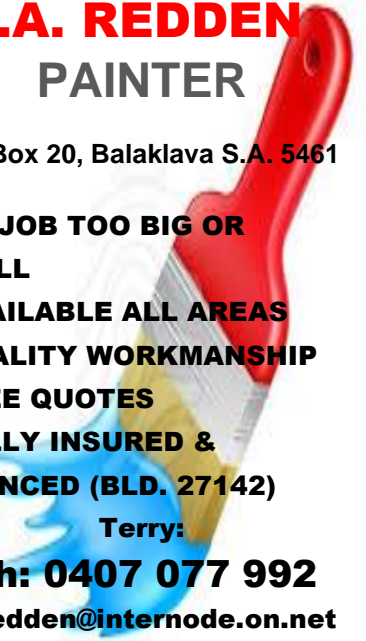
## T.A. REDDEN PAINTER

PO Box 20, Balaklava S.A. 5461

- \*NO JOB TOO BIG OR SMALL
- \*AVAILABLE ALL AREAS
- \*QUALITY WORKMANSHIP
- \*FREE QUOTES
- \*FULLY INSURED & LICENCED (BLD. 27142)

Terry:

Ph: 0407 077 992  
taredden@internode.on.net



## ROWAN RAMSEY MP Federal Member for Grey



104 Ellen Street Port Pirie SA 5540  
Local Call: 1300 301 742  
Phone: (08) 8633 1744  
www.rowanramsey.com.au

Warm Up this Winter with our range of Blankets and Quilts!!! Come in store and have a look at our full range!



## BALAKLAVA STITCH JOINT

2-6 HOWE STREET, BALAKLAVA -  
8862 1074

For all your Blinds / Awnings, Flooring  
and Furniture needs



FOODLAND  
BALAKLAVA  
13 WALLACE ST  
BALAKLAVA SA 5461  
PHONE 8862 1571  
FAX 8862 2096

Online Shopping:  
[foodlandbalaklava.com.au](http://foodlandbalaklava.com.au)

## FRASER ELLIS MP MEMBER FOR NARUNGA



37 Graves Street Kadina 5554  
(08) 8832 2455  
narungga@parliament.sa.gov.au  
www.fraserellis.com.au

## Stress Free Property Conveyancing

When buying or selling property – either by private contract or through an agent – ensure your peace of mind and be confident that your contractual rights are protected.

Call us for an obligation free quote.



GERMEIN REED  
Lawyers & Conveyancers  
2A Forster Street Kadina  
PO Box 12 Kadina SA 5554  
8821 1700  
www.grmlawyers.com.au

## WH TREVERTON PAINTER

WAYNE  
0417 889 753

15 Railway Tce  
Balaklava SA 5461  
Home phone: 8862 1509



BLD Lic: 219551