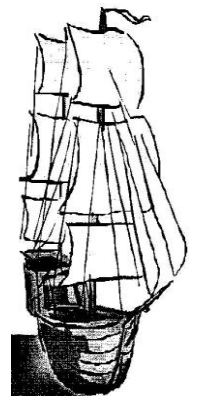


# Port Wakefield Community Newsletter

February 2025  
Circulation 450

This is a Publication of the  
Port Wakefield Community Newsletter Inc.  
Email: [p.w.news@hotmail.com](mailto:p.w.news@hotmail.com)  
Published monthly



## COMMUNITY CALENDAR

### Monday

CFS Cadets (fortnightly) 5.00pm - 6.00pm  
CFS Training 6.00pm - 8.30pm

### Tuesday

Clementina Corner 10:00am-1:00pm  
Dr Nyoni 10.15am-1pm  
SA Ambulance Training 7.30pm-9.30pm

### Wednesday

Community Bus (pension week) 9.30am

### Thursday

Transfer Station Open 10am-12pm

### Saturday

UC Op-Shop 9.30am-11.30am  
Transfer Station Open 10am-12pm

### Sunday

Library 12:00pm-1.30pm  
Courthouse Museum  
(2nd Sun each month) 11:30am-2:30pm  
Clementina Corner  
(2nd Sun each month) 11:30am-2:30pm

Transfer Station Open 9am-11am

### Catholic

Mass 9:00am

### Uniting Church (UC)

Service 10.00am

### Bin Days

#### January-

Red Bin and Green Bin- Thursday Jan 30th

#### February-

Red Bin- **Wednesday** February 5th and 19th

Yellow Bin- **Thursday** February 6th and 20th

Green Bin- **Thursday** February 13th and 27th

## Congratulations to Samson Bucol, Port Wakefield's 2025 Citizen of the Year!



### Thought for the day

*To be yourself in a world that is constantly trying  
to make you something else is the greatest  
accomplishment.*

- Ralph Waldo Emerson

We acknowledge the Kaurna people as the  
traditional custodians of the Adelaide Plains and  
pay our respects to Elders past, present, and  
emerging.

### Our March issue will be out on Wednesday February 26<sup>th</sup>.

News Items to be submitted by email to  
[p.w.news@hotmail.com](mailto:p.w.news@hotmail.com) or to the Newsletter box in the Post  
Office by 9am on Tuesday February 25<sup>th</sup>.  
Info Phone: Jill 0448 709 800

**HUMMOCKS NETBALL CLUB**

**NETBALL**

# Registrations ARE OPEN

We encourage ALL PLAYERS to register ASAP so we can look at player numbers

**SENIORS - \$150**  
**JUNIORS - \$110**

Please note: NETSET registration link still to come.

If you have any questions/queries, please contact ...  
Ash Williams - 0437 849 227 or hncsecretary@hotmail.com

**Juniors...**  
Sports Vouchers are accepted, PLEASE read next tile before registering & for more info.

**Seniors...**  
Please register before trialing & provide your positions etc in the text box provided.



**HUMMOCKS NETBALL CLUB**

# JUNIOR Sports Vouchers



**Steps...**

1. Please PAY your child's subs upon registration
2. Download/print a voucher from [sportsvouchers.sa.gov.au](http://sportsvouchers.sa.gov.au)
3. Fill it out & submit to treasurer, Kirsty Williams, after registering. She will claim the voucher & reimburse you once completed.

**Please submit all vouchers to Kirsty before April 26, 2025**

If you have any questions or concerns, please contact secretary  
Ash Williams - 0437 849 227

**Alternatively, please wait & register at one of our registration nights.**

Players can register via PlayHQ website:  
<https://www.playhq.com/netball-australia/register/3690e7>  
If you need help registering or have any questions, please contact Ash Williams on 0437 849 227 or hncsecretary@hotmail.com.

Don't forget – new schedule starts in February and your red bin will be collected fortnightly on Wednesdays.

## 2025 URBAN KERBSIDE COLLECTION CALENDAR

**WAKEFIELD REGIONAL COUNCIL**

Don't forget general waste and recycling are collected on the same week. Green waste is collected on the alternate week.

Locate your township on the table below to determine your collection day.

<b>Fortnightly general rubbish collection</b> <small>(Small 140 litre red lid bin)</small>	<b>Tuesday</b>	Avon, Halbury, Hamley Bridge, Hoyleton, Owen and Pinery
	<b>Wednesday</b>	Balaklava (whole township), Bowmans, Port Wakefield
	<b>Thursday</b>	Blyth, Brinkworth, Lochiel and Snowtown
<b>Fortnightly recycling collection</b> <small>(240 litre yellow lid bin)</small>	<b>Tuesday</b>	Avon, Balaklava north of Railway Tce, Halbury, Hamley Bridge, Hoyleton, Owen and Pinery
	<b>Wednesday</b>	Balaklava South of Railway Tce
<b>Fortnightly green waste collection</b> <small>(240 litre green lid bin)</small>	<b>Tuesday</b>	Avon, Balaklava north of Railway Tce, Halbury, Hamley Bridge, Hoyleton, Owen and Pinery
	<b>Wednesday</b>	Balaklava south of Railway Tce
	<b>Thursday</b>	Blyth, Bowmans, Brinkworth, Lochiel, Port Wakefield and Snowtown

**WASTE AND RECYCLABLE COLLECTION - FORTNIGHTLY (RED AND YELLOW)**

FEBRUARY						
Su	Mo	Tu	Wed	Thu	Fri	Sat
						1
2	3	4	5	6	7	8
9	10	11	12	13	14	15
16	17	18	19	20	21	22
23	24	25	26	27	28	

MARCH						
Su	Mo	Tu	Wed	Thu	Fri	Sat
						1
2	3	4	5	6	7	8
9	10	11	12	13	14	15
16	17	18	19	20	21	22
23	24	25	26	27	28	29
30	31					

APRIL						
Su	Mo	Tu	Wed	Thu	Fri	Sat
		1	2	3	4	5
6	7	8	9	10	11	12
13	14	15	16	17	18	19
20	21	22	23	24	25	26
27	28	29	30			

MAY						
Su	Mo	Tu	Wed	Thu	Fri	Sat
					1	2
3	4	5	6	7	8	9
10	11	12	13	14	15	16
17	18	19	20	21	22	23
24	25	26	27	28	29	30
31						

JUNE						
Su	Mo	Tu	Wed	Thu	Fri	Sat
						1
2	3	4	5	6	7	8
9	10	11	12	13	14	15
16	17	18	19	20	21	22
23	24	25	26	27	28	29
30						

**Please make sure your bin is out the night before collection**

## Jill's sewing

clothes mending and alterations

Phone 0448709800  
For all your sewing needs.



### Community Bus

Dates for Community Bus to

**Balaklava-**  
February 12th  
February 26th



Pickup at 9:30am,  
Depart Balaklava at 12:45pm

Contact Helen on 0407 671 141 to book your seat

# Port Wakefield Australia Day Breakfast 2025

Thank you to all who attended the 2025 Australia Day Breakfast.

Thank you to Tara Baggendorf for the opening speech.

Thank you to Luciano for your beautiful singing of We Are Australian & the National Anthem.

Thank you to John Kipling for presenting the Port Wakefield Citizen of the Year Award.

Congratulations to Samson Bucol on being awarded Port Wakefield Citizen of the Year 2025 for his contribution to the CFS & helping and encouraging fellow Filipino migrants as they integrate into the local community.

Thank you to our sponsors and volunteers who made the breakfast a success.

Nomination forms for Port Wakefield Citizen of the Year 2026 are available via email.

Nominations can be submitted throughout the year to our email address below.  
[pwcmc@portwakefield.sa.au](mailto:pwcmc@portwakefield.sa.au)



*Images and text from Port Wakefield CMC Facebook page. Follow them for the latest news!*

Stuck for a Valentine's present? You can't go wrong with cake!



### Red Velvet Cake

#### Ingredients

- 2 1/2 cups plain flour sifted
- 1 tsp baking powder
- 1 tsp salt
- 2 tbs cocoa powder
- 50 ml red food colouring
- 120g butter, room temperature
- 1 1/2 cups sugar
- 2 eggs room temperature
- 1 tsp vanilla extract
- 1 cup buttermilk room temperature
- 1 tsp white wine vinegar
- 1 tsp bicarbonate of soda

#### Cream cheese icing

- 450 g cream cheese, softened
- 120g butter, softened
- 1 tsp vanilla extract
- 2 1/2 cups icing sugar
- 1 pinch salt

1. Preheat oven to 180C. Butter and flour two 23cm round cake pans.
2. Sift together the flour, baking powder and salt into a bowl.
3. In another bowl, mix the food colouring and cocoa together.
4. In another large bowl, beat butter and sugar together until light and fluffy.
5. Beat in eggs one at a time, and then the vanilla and red cocoa paste. Add one third of the flour mixture to the butter mixture, beat well, then beat in half of the buttermilk.
6. Mix in another third of the flour mixture, then the rest of your buttermilk. End with the last third of the flour mixture and beat until well combined.
7. In a small bowl, mix the vinegar and baking soda. Add it to the cake batter and stir well.
8. Divide batter evenly between the cake pans and bake for 25-30 minutes, or until a skewer inserted into the centre comes out clean.
9. Cool the cakes in their pans on a rack for 10 minutes. Allow to cool completely before icing.

To make cream cheese icing, blend together cream cheese and butter with a hand mixer until smooth. Reduce speed to low, then blend in icing sugar, salt and vanilla. Increase speed to high and beat until light and fluffy.

### SHOPPING DAY at SALISBURY and MUNNO PARA MONDAY MARCH 3RD

Enjoy the morning at Parabanks Shopping Centre, Salisbury, then travel to Munno Para for the afternoon.

Cost is \$12.00

Contact Helen 0407 671 141  
or Terry 0428 867 107

Pick up 8.30am  
Return 3.30 approx.



## Will you answer the call?

SA Ambulance service is looking  
for more volunteers in your region



[saasvolunteer.sa.gov.au](http://saasvolunteer.sa.gov.au) or call 1300 175 584

The Court House Museum is looking  
for donations of old farm machinery to  
put on display. If you can help, please  
contact Kai on 0437 719 931



CLARE VALLEY RACING CLUB

**VALENTINES**

**DAY TWILIGHT RACES**

**GATES OPEN 1:30PM**

**THE DAY INCLUDES**

- Fashion at the Races
- Sportsbet Bride n Groom Relay Race
- Picnic Garden
- Trackside Marquees
- FREE Shuttle Buses from Clare return
- TAB & Bookmakers
- Big Screen Video
- Lisas Coffee Van
- Spuds n More and Indian Food Vans
- BBQ
- Seated Dining
- Fully Licensed
- KJ the DJ

**FRIDAY 14TH FEBRUARY 2025**



**SCAN TO BOOK NOW**

OR VISIT [COUNTRYRACINGS.AU](http://COUNTRYRACINGS.AU)

**CLAAS**



**Yesterday's News**



*Kapunda Herald*, February 24<sup>th</sup>, 1905



—Concert.—

Last Wednesday evening a very successful concert was held in the Foresters Hall by the Port Wakefield Brass Band, when a large and appreciative audience was treated to a first class entertainment by local amateurs. Several selections were very creditably rendered by the band, which has made great progress since it was formed.

—Shipping.—

The loading of the Bulumbie will be completed this week, and another large vessel is now ready for loading for the United Kingdom from Messrs Verco Bros large stacks. Great difficulty is being experienced in the shipment of wheat from this port, which at present is very heavy, and during last week several serious blocks took place in the channel through the increased silt. One morning at low water no less than nine crafts were in all sorts of positions, through getting in low grounds when trying to get out to deeper water, and these delays mean something serious when loading those large ships, which are impatient with so much delay and once they get away from here will not be anxious to return to these parts.

—A Wedding—The Conduct of Some Visitors to the Town.—

An interesting wedding took place in St. Albyn's Church last Saturday and was followed by a dance in the Foresters Hall in the evening, which was somewhat interrupted by a party of visitors, who were evidently out for the evening, and sought admission to the hall without the usual invitation. On being remonstrated with they showed fight and some strong language was used, but they met with strong resistance. Blows were exchanged, but M.C. Jones quickly put in an appearance and peace reigned for a time, but was opened later on the wharf; but the visitors again "ran into snags," and left the Port on Sunday, sadder if not wiser men.

—A Tramp.—

A tramp with strong loafing appetite, was warned by M.C. Jones this afternoon to clear, which he point blank refused to do, and dared the officer to remove him, but had woefully reckoned without his host, as he was promptly arrested and placed in durance vita.

[trove.nla.gov.au/newspaper/article/108432603](http://trove.nla.gov.au/newspaper/article/108432603)

**Quiz questions**

- 1-In Roman mythology, who was Cupid's mother?
- 2-Who was Anna Mae Bullock better known as?
- 3-What is the motto of the Three Musketeers?
- 4-What Japanese word means "empty orchestra"?
- 5-What is the only continent with no active volcanoes?

**Sudoku 31**

2							3	
	1				9	5		
6			4					7
1			9	5				7
		4		8		2		
	6			7	4			5
3					8			6
		6	1				4	
	9							2

[SudokuoftheDay.com](http://SudokuoftheDay.com)

**Sudoku 30 Solution**

2	6	5	7	3	9	4	1	8
7	9	1	4	8	2	5	3	6
8	4	3	6	5	1	9	7	2
4	3	7	8	1	6	2	9	5
6	2	9	3	4	5	1	8	7
1	5	8	2	9	7	6	4	3
3	1	2	5	7	4	8	6	9
9	8	6	1	2	3	7	5	4
5	7	4	9	6	8	3	2	1

# Dr Paw Vet Clinic Balaklava



**1 Fisher St  
Balaklava**

**Open on:  
Monday to Thursday  
from  
09:00am to 04:00pm**

## Our Services

- 🐾 Consultation
- 🐾 Health checks
- 🐾 Microchipping
- 🐾 Vaccinations
- 🐾 Preventive medicine
- 🐾 Emergency medicine
- 🐾 Desexing
- 🐾 Dietary advice
- 🐾 Pet weight management
- 🐾 Hospital care
- 🐾 Dental care
- 🐾 Ultrasound imaging
- 🐾 General surgery
- 🐾 Emergency surgery
- 🐾 Soft tissue surgery
- 🐾 General routine care
- 🐾 In house pathology
- 🐾 Pet boarding and more...

**After hours: 0481 35 45 55**



**8862 2010**



# 2025 Football

## JUNIOR AGES

<b>SENIOR COLTS</b> <b>(U/17s)</b> 2008 2009 2010	<b>JUNIOR COLTS</b> <b>(U/14s)</b> 2011 2012 2013
<b>MINI COLTS</b> <b>(U/11s)</b> 2014 2015 2016	<b>MINI MINIS</b> <b>(U/8s)</b> 2017 2018
	<b>AUSKICK</b> 2019 2020



HW Eagles Football registrations are now open for the 2025 season!

Players, team managers, volunteers & supporters can now register via PlayHQ website :

<https://www.playhq.com/afl/register/3d1fa8>

### JUNIOR / UNDER-AGE PLAYERS

- Sports vouchers can be used for Reception to Year 9 students but **MUST BE REDEEMED** during the registration process.
- AusKick registrations will not be accepted through this platform so please do not try to register an AusKick participant. There will be more details to come about AusKick registrations.

If you need help, please contact Robyn Hayes (secretary) on 0427 805 014 or [hwefcsecretary@gmail.com](mailto:hwefcsecretary@gmail.com)

### Port Wakefield Community Management Committee Meeting

Soldiers Memorial Hall  
February 11<sup>th</sup> at 6pm



All welcome to attend!

HUMMOCKS WATCHMAN EAGLES FOOTBALL CLUB



# Registrations ARE OPEN

A & B grade ... \$100 + \$27.50 SANFL fee  
Senior & Junior colts ... \$50 + \$22.50 SANFL fee  
Mini & Mini Minis ... \$25 + \$22.50 SANFL fee  
Non-player/volunteer ... \$5

**Reminder!**  
Sports vouchers accepted.  
Vouchers **MUST BE** redeemed during registration process.



SCAN TO ACCESS OUR REGISTRATION PAGE ON PLAYHQ

PLEASE NOTE: A small PlayHQ service fee is applicable to this year's subs




Follow us on:  
 facebook.

PRINTED SIGNAGE, DESIGNED & INSTALLED

# 0417 854 329

[midnorthsignco@gmail.com](mailto:midnorthsignco@gmail.com)

12 Edith Terrace, Balaklava

# JOEL WILSON PLUMBING & GAS 0458 103 833

I'M A PLUMBER FOR CRYIN' OUT LOUD! I HAVE  
A LICENSE TO WEAR MY PANTS THIS LOW!!



EFTPOS available

Opening hours: Tuesday, Wednesday & Thursday from 9am until 3pm, or by  
appointment.



Lic No. PGE269220

ABN: 84 627 968 729



# Birthdays

## January



Birthstone- Garnet  
Flower- Carnation

- January 29- Toni Olson  
Zak Brown
- January 30- Grace Underwood
- January 31- Patricia Jane  
Underwood  
Dwayne Menzies

## February

Birthstone- Amethyst  
Flower- Violet

- February 2- Ryan Lane-Watson
- February 5- Trish Halls
- February 6- Malcolm Yeates  
Andrew Holland
- February 7- Amelia Cicolella  
Brock Cornish
- February 11- Kristy Eglinton
- February 12- Brian Underwood
- February 14- Jonathon Coverdale  
Mandy Coverdale
- February 16- Chelsey Wenzel
- February 18- Elizabeth Anderson
- February 19- Luke Underwood  
Monica Dolan  
Jamie O'Leary
- February 20- Ashley Wenzel  
Jeff Daniel  
David Carslake
- February 21- Annabelle  
Underwood
- February 25- Bowdie Bradwell
- February 26- Heather Brown

# Camping



### Across

- 1 Foot wear
- 5 Continent
- 9 Cut of beef
- 14 Pound
- 15 Protocol
- 16 Solitudinarian
- 17 Liberal
- 18 Aroma
- 19 Terra \_\_\_ (type of clay)
- 20 Conger
- 21 Race on skis
- 23 Stir
- 24 Runny
- 26 Abdominal muscles (abbr.)
- 28 Swipe
- 29 Make a duplicate
- 31 Ghost's greeting
- 34 Nitro \_\_\_
- 37 Water retention
- 39 Clang
- 40 And so forth
- 41 Stink

- 42 \_\_\_ Lee (pie brand name)
- 44 Shuck (2 wds.)
- 47 Gall
- 48 Russia
- 50 Both
- 51 Heat unit
- 52 Chilli brand
- 56 Reduce (abbr.)
- 59 Very old age
- 63 Vane direction
- 64 Islam's head
- 66 Molecule
- 67 Bread
- 68 Brutal
- 69 Decant
- 70 Gets older
- 71 Looped cloth
- 72 Scrape
- 73 Stimulate

### Down

- 1 Cut with a saw
- 2 Orange yellow
- 3 Texas stew
- 4 Container
- 5 Eucharist
- 6 Carbonated drink
- 7 False god graven image
- 8 Air (prefix)
- 9 Tender loving care
- 10 Footwear
- 11 Upon
- 12 Fish catchers
- 13 Long time periods
- 21 \_\_\_ and span (very clean)
- 22 Chart of area or terrain
- 25 Animal kingdom division
- 27 Sayonara
- 29 Quoter
- 30 One time
- 31 Bar drink
- 32 Bode
- 33 Sturdy tree
- 34 Hiking equipment
- 35 Spree
- 36 Representatives
- 38 Amusing
- 39 Pounds per square inch
- 43 Small house
- 45 Portable gas light
- 46 Mud
- 49 Light in the sky
- 51 Thorny plant
- 53 "Gone With the Wind" actress
- 54 Sugar-free brand
- 55 Bread leavening
- 56 Account (abbr.)
- 57 Nude
- 58 Make unclear
- 60 Pixies
- 61 Cranny
- 62 Decorative needle case
- 65 Soar
- 67 Animal foot

## Swimming Answer



### Quiz answers

- 1-Venus
- 2-Tina Turner
- 3-"All for one, and one for all."
- 4-Karaoke
- 5-Australia

**Reminder: The Community Library will be closing in 2025.**

All books and DVDs are now three for \$1.

Drop in on Sundays between 12 and 1:30 and pick up some bargains!

**ADVERTISEMENT PRICES**

- FULL PAGE     \$30.00
- ½ PAGE        \$17.50
- ¼ PAGE        \$ 12.50
- 2 or 3 lines    Free

**Business Services Directory**  
**\$200/year**

To place your ad, you can email us at [p.w.news@hotmail.com](mailto:p.w.news@hotmail.com), drop it in the Newsletter Box at the post office, or call Jill on 0448 709 800

**MID NORTH**  
**Pest and Weed Control**  
**ALL PEST PROBLEMS**  
**GENERAL & RURAL WEEDS**

- Termites
- Spiders
- Bees, Wasps
- Rats & Mice
- Flies, Fleas
- Millipedes
- Earwigs
- Salvation Jane
- Artichokes
- Calthrop
- Horehound
- Cape Tulip



Call Andrew Boylan  
 Office 8842 2001  
 422 Main North Road, Clare  
 HEALTH COMM. LIC NO 12

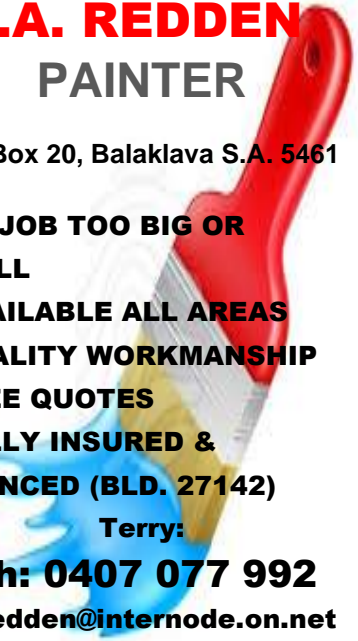
**T.A. REDDEN**  
**PAINTER**

PO Box 20, Balaklava S.A. 5461

- \*NO JOB TOO BIG OR SMALL
- \*AVAILABLE ALL AREAS
- \*QUALITY WORKMANSHIP
- \*FREE QUOTES
- \*FULLY INSURED & LICENCED (BLD. 27142)

Terry:

**Ph: 0407 077 992**  
[taredden@internode.on.net](mailto:taredden@internode.on.net)



**ROWAN RAMSEY MP**  
*Federal Member for Grey*



104 Ellen Street Port Pirie SA 5540  
 Local Call: 1300 301 742  
 Phone: (08) 8633 1744  
[www.rowanramsey.com.au](http://www.rowanramsey.com.au)

Get Summer Ready with our New Range of  
 Outdoor Furniture!!!



**BALAKLAVA STITCH JOINT**

2-6 HOWE STREET, BALAKLAVA - 8862 1074  
 For all your Blinds / Awnings, Flooring  
 Furniture and Manchester needs



**FOODLAND**  
**BALAKLAVA**  
 13 WALLACE ST  
 BALAKLAVA SA 5461  
 PHONE 8862 1571  
 FAX 8862 2096  
**Online Shopping:**  
[foodlandbalaklava.com.au](http://foodlandbalaklava.com.au)

**FRASER ELLIS MP**  
 MEMBER FOR NARUNGA



37 Graves Street Kadina 5554  
 (08) 8832 2455  
[narungga@parliament.sa.gov.au](mailto:narungga@parliament.sa.gov.au)  
[www.fraserellis.com.au](http://www.fraserellis.com.au)

**Stress Free Property**  
**Conveyancing**

When buying or selling property – either by private contract or through an agent – ensure your peace of mind and be confident that your contractual rights are protected.

Call us for an obligation free quote.



**GERMEIN REED**  
 Lawyers & Conveyancers  
 2A Forster Street Kadina  
 PO Box 12 Kadina SA 5554  
 8821 1700  
[www.grmlawyers.com.au](http://www.grmlawyers.com.au)

**WH TREVERTON**  
**PAINTER**

**WAYNE**  
**0417 889 753**

15 Railway Tce  
 Balaklava SA 5461  
 Home phone: 8862 1509



BLD Lic: 219551