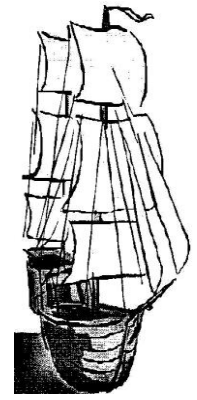




Port Wakefield Community Newsletter

April 2025
Circulation 450

This is a Publication of the
Port Wakefield Community Newsletter Inc.
Email: p.w.news@hotmail.com
Published monthly



COMMUNITY CALENDAR

Monday

CFS Cadets (fortnightly) 5.00pm - 6.00pm
CFS Training 6.00pm - 8.30pm

Tuesday

Clementina Corner 10:00am-1:00pm
Dr Nyoni 10.15am-1pm
SA Ambulance Training 7.30pm-9.30pm

Wednesday

Community Bus (pension week) 9.30am

Thursday

Transfer Station Open 10am-12pm

Saturday

UC Op-Shop 9.30am-11.30am
Transfer Station Open 10am-12pm

Sunday

Library 12:00pm-1.30pm
Courthouse Museum
(2nd Sun each month) 11:30am-2:30pm
Clementina Corner
(2nd Sun each month) 11:30am-2:30pm

Transfer Station Open 9am-11am

Catholic

Mass 9:00am

Uniting Church (UC)

Service 10.00am

Bin Days

Red Bin- Wednesday April 2nd, 16th, and 30th

Green Bin- Thursday April 10th and 24th.

Yellow Bin- Thursday April 3rd, 17th, and May 1st

PORT WAKEFIELD EVENTS EASTER CRAFTS AND HOPPY TRAIL

GOOD FRIDAY
18TH APRIL 2025
11:00 AM TO 2PM

\$10 PER CHILD

THIS WILL INCLUDE CRAFTS,
HOPPY TRIAL BAG AND
SAUSAGE SIZZLE

Hoppy Trail and
Crafts will start at the
Port Wakefield
Bowling Club



Thought for the Day

The most wasted of days is one without laughter.
— E. E. Cummings

We acknowledge the Kurna people as the traditional custodians of the Adelaide Plains and pay our respects to Elders past, present, and emerging.

Our May issue will be out on Wednesday April 30th.
News Items to be submitted by email to
p.w.news@hotmail.com or to the Newsletter box in the Post
Office by 9am on Tuesday February 25th.
Info Phone: Blair 0409 329 644



Let Us Care For You

Local service providing
in home care for self-managed aged care and NDIS recipients

Services provided include:

Nursing, Personal Care, Domestic Assistance
and light home maintenance.

Assistance available for transition to accessing self-managed
plans

Specialised services available for:

- Stoma care • Wound care and assessment
- Continence care and assessment • Chronic disease management

(08) 8888 4801
rene@letuscare.com.au

Easter Services

Catholic Church

Good Friday Service at 9:00am
Easter Sunday Service will be held in
Balaklava at 9:00am
(No Port Wakefield Service)

United Church

Good Friday Service at 9:00am
Easter Sunday Service at 7:30am



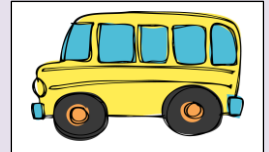
Community Bus

Dates for Community Bus to

Balaklava-

April 9th

April 23rd



Pickup at 9:30am,

Depart Balaklava at 12:45pm

Contact Helen on 0407 671 141 to book your
seat

SCHOOL HOLIDAY Easter

AVON DISTRICT HALL
1883 AVON RD. AVON.SA.

TUESDAY April 15TH OPEN 1PM to 3.30/4PM

Easter Craft Activities-
Games & treasure hunt-
Lucky dips, Prizes, Guessing Game 50cents a shot

Cost \$5.00 pp over 2years

All children must be accompanied by an adult.
All materials supplied

Bookings required so we have enough material and save on disappointments.

Info & Bookings by 13th April 2025



Ph.88671127

Ph.0419 819 420

Quiz questions

- 1-What is the capital city of Canada?
- 2-What country is The Jungle Book set in?
- 3-What was the name of the ship that took Charles Darwin to South America and Australia?
- 4-Where does Heinekin beer come from?
- 5-Which Greek mythological figure would turn you to stone if you looked at them?



Follow us on:
 facebook.

PRINTED SIGNAGE, DESIGNED & INSTALLED

0417 854 329

midnorthsignco@gmail.com

12 Edith Terrace, Balaklava

ANZAC Day Dawn Service



Memorial Arch at PW Oval

Breakfast at the clubrooms following the dawn service.

PORT WAKEFIELD EVENTS

Easter Bowls Day



Good Friday
18th of April 2025
Port Wakefield Bowling Club

BBQ Lunch from 12pm
Bowls Comp start 1pm

\$5 PER PLAYER WINNER TAKES ALL

- * Raffles
- * Cash Prizes
- * Chocolate Wheel
- * Bar Facilities

Come join in a fun filled day
Kids Crafts and Hoppy Trail from 11am
BBQ lunch from 12pm
Bowls Competition from 1pm
All Welcome

PW.COMMEVENTS@GMAIL.COM
ALIESHA - 0413888096



BROCK 0413 213 553 | MICHAEL 0407 976 175
OUR PROJECTS ARE NOT ONLY VISUALLY STUNNING BUT ALSO DELIVERED EFFICIENTLY AND ON TIME!

ABOUT US

M&VL Anastasiou painters, a family-owned business with 50+ years of combined experience, was established in 1990. We are a 3rd generation father and son team, committed to using old-school painting methods and focusing on detail. Fully licensed, insured, and accredited, our goal is to create lifelong satisfied customers.

LIST OF PAINTING AND REPAIR SERVICES:

- Painting Services:
- Heritage Repainting
- Domestic Repainting
- Light Commercial Painting

SPECIALISED REPAIR SERVICES:

- Repointing
- Rendering
- Solid Plastering
- Crack Repairs
- Cyrock Repair
- Flushing
- minor repairs
- maintenance

SPECIAL OFFER



COUNTRY TO TOWN
LANDSCAPING AND PROPERTY SERVICES
TO ENJOY AN INCREDIBLE 5% DISCOUNT, SIMPLY PRESENT THIS FLYER WHEN PURCHASING A COMPREHENSIVE SALE-READY PACKAGE, INCLUDING PAINTING SERVICES.



ABN 85971073718 We serve Adelaide, Barossa, Riverland, and Mid North with a friendly team ready to help.
Bld 156274

Happy birthday for the 6th of April to The Mexican Jumping Bean, better known as Aurora Mundy.

Enjoy your 6th birthday!



I hope you have an awesome day.

Love from Aunty Pat

Dr Paw Vet Clinic Balaklava



**1 Fisher St
Balaklava**

**Open on:
Monday to Thursday
from
09:00am to 04:00pm**

Our Services

- 🐾 Consultation
- 🐾 Health checks
- 🐾 Microchipping
- 🐾 Vaccinations
- 🐾 Preventive medicine
- 🐾 Emergency medicine
- 🐾 Desexing
- 🐾 Dietary advice
- 🐾 Pet weight management
- 🐾 Hospital care
- 🐾 Dental care
- 🐾 Ultrasound imaging
- 🐾 General surgery
- 🐾 Emergency surgery
- 🐾 Soft tissue surgery
- 🐾 General routine care
- 🐾 In house pathology
- 🐾 Pet boarding and more...

After hours: 0481 35 45 55



8862 2010

JOEL WILSON PLUMBING & GAS 0458 103 833

I'M A PLUMBER FOR CRYIN' OUT LOUD! I HAVE
A LICENSE TO WEAR MY PANTS THIS LOW!!



EFTPOS available

Opening hours: Tuesday, Wednesday & Thursday from 9am until 3pm, or by
appointment.



Lic No. PGE269220

ABN: 84 627 968 729

What is Palliative Care Connect?

Palliative Care Connect provides information and links to palliative care and bereavement supports for people with life-limiting illnesses and their family, friends, and carers, as well as health and aged care professionals. Palliative Care Navigation helps people experience seamless, joined up care and support.

What is palliative care?

From the time of diagnosis, palliative care helps people of all ages with a life-limiting illness live their life fully and comfortably. A life-limiting illness is one that is likely to cause death in the foreseeable future. This includes:

- > Cancer
- > Neurological disease
- > Dementia
- > Advanced kidney, heart, liver, and lung disease

Palliative care addresses physical symptoms as well as emotional, social, and spiritual concerns.

Family, friends and carers can also receive practical and emotional support in their caring role and in grief and bereavement.

What is bereavement?

Bereavement is the emotional experience of losing someone important due to death. Grief can start before someone has died, such as when a loved one is first diagnosed with a life-limiting illness.

For more information

Visit our website for key information about palliative care and bereavement. A self-assessment tool is available to help people identify the support and resources they may need. A search directory is also available to find relevant palliative care, bereavement and community services near you.

Visit: www.palliativecareconnect.com.au

HELP app

The Healthy End of Life Program (HELP) app makes it easier for people to coordinate social and practical support via one central place, so family, friends and community can stay connected, show-up and get involved.

1. Download the app



Healthy End of Life Planning

2. Sign up
3. Add tasks
4. Invite friends, family and carers

Palliative Care Connect is supported by funding from the Australian Government Department of Health and Aged Care.



Palliative Care Connect

Find your way

palliativecareconnect.com.au

Get support to access palliative care

Learning you, or someone you love, have been diagnosed with a life-limiting illness is unimaginable. Knowing what to do next can be overwhelming.

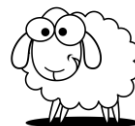
Palliative Care Connect is a free statewide service that provides information and connections for individuals with life-limiting illnesses, their families, friends, and carers.

Call your local Palliative Care Navigator 1800 596 799, Monday - Friday 8.30am to 4.00pm.



Yesterday's News

Kapunda Herald April 15th, 1904



THE WEATHER.

The weather continues dry and hot every day alike. Farmers have commenced seeding in hopes of early rains, while others are trying through the day to keep cool, and at night to avoid the mosquitoes, which are very much in evidence.

MUTTON RISING—A FISHING ADVENTURE.

Mutton has been raised to-day one half penny per pound, and shortly it will be cheaper to buy meat from some foreign land. To avoid meat as much as possible boats are being fitted up with a view of obtaining a supply of fish, and this evening a lady, with a party of visitors, attempted to follow a snook that was sporting down the river, but an ugly lurch of the boat upset the lady in more mud than water, from which she managed to escape to dry land. The fish is still at large.

The members of our brass band are now practising nearly every night, and with the rapid progress they are making will soon be a credit as well as a valuable asset to the town.

trove.nla.gov.au/newspaper/article/108329219

Sudoku 33

		8	2			4	7	
				8		3	1	
	9				4	8		
	3	4	6	1				
			4		7			
				5	8	1	4	
		9	8				3	
	1	2		9				
	7	3			1	6		

Sudokuoftheday.com

Sudoku 32 Solution

2	6	5	7	3	9	4	1	8
7	9	1	4	8	2	5	3	6
8	4	3	6	5	1	9	7	2
4	3	7	8	1	6	2	9	5
6	2	9	3	4	5	1	8	7
1	5	8	2	9	7	6	4	3
3	1	2	5	7	4	8	6	9
9	8	6	1	2	3	7	5	4
5	7	4	9	6	8	3	2	1

Birthdays

March

Birthstone- Bloodstone
Flower- Jonquil

March 28- Haylee Studham

April

Birthstone- Diamond
Flower- Sweet pea

April 1- Sheeba Milton

April 2- Stephannie Adey
Shane McGuiness
Matthew Pain

April 4- Bradley Carslake
Dylan Ashby

April 5- Madge Simpson
Darcy Stopp

April 9- Harvey Cresswell

April 10- Tammy Frank

April 14- Renae Yeates
Peter Yeates
Paul Watson

April 15- Lee-Anne Guerin
Jacob Lane

April 16- Brittany Taylor

April 17- Stewart Butson
Adrian Brown
William Robertson
Alison Martin

April 18- Piper Boon

April 19- Tegan Guerin

April 22- Karli Andrew

April 24- John Guerin
Connor McKay
Quinn McKay
Dominic Martin

April 25- Sky Wolf

April 28- Pat Van Der Sman

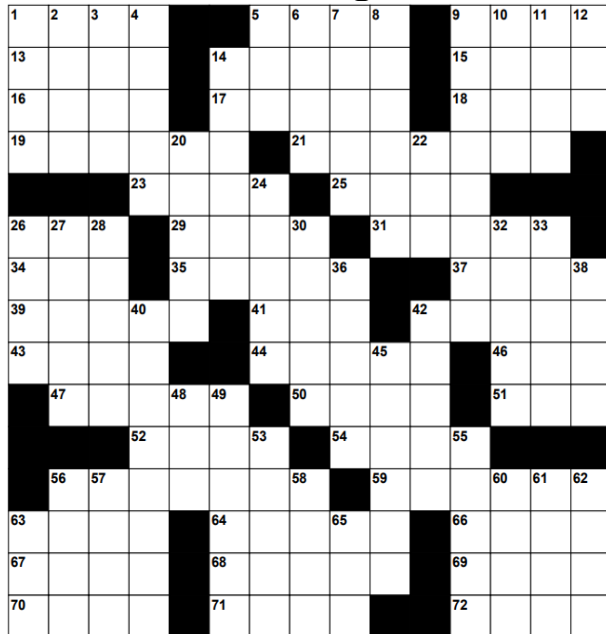
April 29- Sandra Smith
Bailey Kai Baggendorf

Anniversaries

April 14- Bart and Michelle Butson
Paul and Tanya Watson

April 20- Lydia and Gary Berry

Hiking



ACROSS

- 1 Drill
- 5 Father
- 9 Negative (prefix)
- 13 Prayer ending
- 14 Desires
- 15 Stare
- 16 Hold out
- 17 Soothing agents
- 18 Alder
- 19 Advanced medical student
- 21 Attention and prudence
- 23 Traveled by horse
- 25 Clip
- 26 Toll
- 29 Mountain top
- 31 Composition
- 34 American College of Physicians (abbr.)
- 35 Goofed
- 37 Dim

- 39 Architect Frank ___ Wright
- 41 Peeper
- 42 Literature
- 43 Clothing decoration
- 44 Decoration
- 46 Foot extension
- 47 Not these
- 50 Input
- 51 Gray sea eagle
- 52 Butterfly's cousin
- 54 "First in, first out"
- 56 State of the atmosphere
- 59 Canadian capital
- 63 Robe
- 64 Regions
- 66 Trigger
- 67 Terminated
- 68 Time being
- 69 Snaky fish
- 70 Same
- 71 Abortis
- 72 Merit

DOWN

- 1 Indonesian island
- 2 Asian nation
- 3 State of relaxation
- 4 Infix
- 5 Cause of sickness
- 6 Coalition
- 7 Baby sheep sound
- 8 Calm down
- 9 Height of a location above sea level
- 10 Roman emperor
- 11 Adolescent
- 12 Wrath
- 14 Move about without purpose
- 20 Caught with a lasso
- 22 Toddler
- 24 Cornstalk
- 26 Unplanned downward motion
- 27 Widely known
- 28 Time period

- 30 Made lock openers
- 32 Author of "The Inferno"
- 33 Mistake
- 36 Coffee shop order
- 38 Sharp
- 40 Small freeholding farmers
- 42 Join two trees
- 45 Worthless
- 48 Drunkard
- 49 Gaseous
- 53 Egret
- 55 Swimming mammal
- 56 Made cloth
- 57 Water pitcher
- 58 Tear
- 60 Domain
- 61 Droop
- 62 Church part
- 63 Governor (abbr.)
- 65 American Cancer Society (abbr.)

Motorcycling solution



WAKEFIELD REGIONAL COUNCIL

Council's Draft Infrastructure Asset Management Plan Review for Buildings and Structures/Site Improvements is now open for community consultation

We're inviting written feedback by 5pm, Wednesday April 9, 2025, you can have a say in the following ways:

- By email - to admin@wrc.sa.gov.au
- By mail - to PO Box 167, Balaklava SA 5461
- By online web form - visit wrc.sa.gov.au

Quiz answers

- 1-Ottawa
- 2-India
- 3-HMS Beagle
- 4-The Netherlands
- 5-Medusa

ADVERTISEMENT PRICES

FULL PAGE \$30.00
½ PAGE \$17.50
¼ PAGE \$ 12.50
2 or 3 lines Free

Business Services Directory

\$200/year

To place your ad, you can email us at p.w.news@hotmail.com, drop it in the Newsletter Box at the post office, or call Jill on 0448 709 800



WE NEED YOU!
WILL YOU ANSWER THE CALL?
VOLUNTEER NOW
BECOME A FIREFIGHTER

For more information drop into the Port Wakefield CFS Station after 6PM on Mondays



COUNTRY TO TOWN
 GARDENING AND PROPERTY SERVICES

Residential & Commercial
OUR SERVICES

- Garden Maintenance
- Once off or Regular Servicing
- Block Slashing
- Weed Control Pest Control
- Rubbish Removal
- Hedge and Tree Trimming
- Gutter Cleaning
- Pressure cleaning
- Carpet and Upholstry Steam
- Cleaning and Stain Extraction
- Commercial & Domestic Cleaning
- Market Ready Internal and External Packages
- Garden Design & Yard Dressing
- End of Lease Cleans

CALL TODAY FOR A FREE QUOTE
 ☎ 0413 213 553

📍 Mid North, Clare, Barossa, Copper Coast, Adelaide
 🇺🇸 Country to Town Gardening and Property Services
 ABN 63 280 267 911





Get Summer Ready with our New Range of Outdoor Furniture!!!



BALAKLAVA STITCH JOINT

2-6 HOWE STREET, BALAKLAVA - 8862 1074

For all your Blinds / Awnings, Flooring Furniture and Manchester needs

T.A. REDDEN
PAINTER

PO Box 20, Balaklava S.A. 5461

- *NO JOB TOO BIG OR SMALL
- *AVAILABLE ALL AREAS
- *QUALITY WORKMANSHIP
- *FREE QUOTES
- *FULLY INSURED & LICENCED (BLD. 27142)

Terry:
Ph: 0407 077 992
taredden@internode.on.net




FOODLAND
 THE MIGHTY SOUTH AUSSIES

FOODLAND
BALAKLAVA
 13 WALLACE ST
 BALAKLAVA SA 5461
 PHONE 8862 1571
 FAX 8862 2096
Online Shopping:
foodlandbalaklava.com.au

MID NORTH
Pest and Weed Control
ALL PEST PROBLEMS
GENERAL & RURAL WEEDS

- Termites
- Spiders
- Bees, Wasps
- Rats & Mice
- Flies, Fleas
- Millipedes
- Earwigs
- Salvation Jane
- Artichokes
- Calthrop
- Horehound
- Cape Tulip




Call Andrew Boylan
 Office 8842 2001
 422 Main North Road, Clare
 HEALTH COMM. LIC NO 12

VF2248993

Stress Free Property Conveyancing



When buying or selling property – either by private contract or through an agent – ensure your peace of mind and be confident that your contractual rights are protected.

Call us for an obligation free quote.



GERMEIN REED
 Lawyers & Conveyancers
 2A Forster Street Kadina
 PO Box 12 Kadina SA 5554
 8821 1700
www.grmlawyers.com.au

FRASER ELLIS MP
 MEMBER FOR NARUNGA

37 Graves Street Kadina 5554
 (08) 8832 2455
narungga@parliament.sa.gov.au
www.fraserellis.com.au